



Integri

a Clear2Pay company

INQ® Open Platform

ePassport Level 2 Test Suite

Background

ePassports have been specified and designed to operate correctly across a wide variety of reading infrastructures worldwide. In order to proof the communication capabilities of the different equipments for the applicative layers (L6 & L7), Integri performs parametric testing of chips. This means that the parameters that are relevant for the Interoperability of the test sample are collected in a test setup and compared with the ICAO and ISO requirements. Integri's ePassport Level 2 Test Suite is available as an off-the-shelf product that runs on the INQ platform.

Key Features

- ICAO Application Data (L6) – Functional Test Tool
This includes a complete set of command tests for the functional evaluation of ePassport chips. Additionally, it includes an implementation of interoperability and security issues, such as mutual authentication and access control tests.
- ICAO Application Data (L7) – Personalization Validation
Easy-to-use test environment to validate the personalization of all types of e-Passport chips. The entire data in the e-Passport chip is put through several test cases and in-depth reports are produced.


Trace files are documented so that the complex content of an ePassport is much easier to understand.

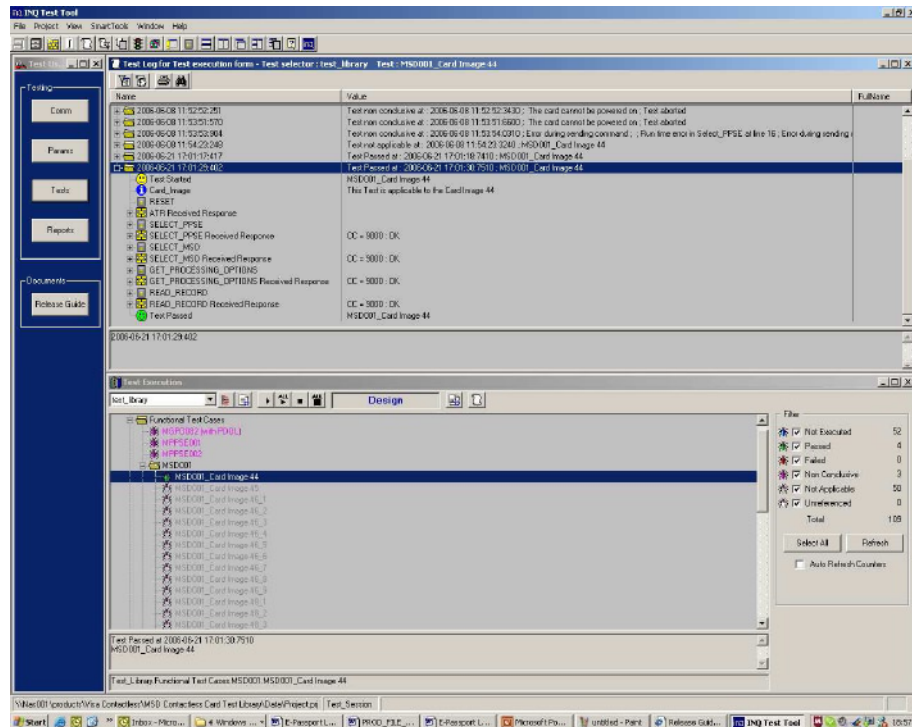
Selection of the ICAO LDS Application, File Access Control for e-passport with BAC protection, BAC specific commands (Get Challenge, Mutual Authenticate), Implementation of the Select File command, Implementation of the Read Binary command

Benefits

- Ensure global interoperability
All tests cases have been implemented and tested with several passports. Through its combination of high level scripting and powerful diagnostics, compliance with ICAO specifications is easily reached.
- Quality insurance
Through early identification of quality issues ensuring the issuance of correctly personalized ePassports.

Out of the box testing





Technical Specifications

The implementation of the ePassport L2 Test Suite is based on the following specifications:

- ICAO WG3TF4 RF PROTOCOL AND APPLICATION TEST STANDARD FOR E-PASSPORT - PART 3 (LEVEL 2)
- DEVELOPMENT OF A LOGICAL DATA STRUCTURE – LDS, 2003
- PKI Digital Signatures For Machine Readable Travel Documents, 2003
- ISO 7816, 2005

Product Family

Runs on the INQ Platform

Requires PCSC Card Reader

www.integri.com



Integri

a Clear2Pay company

Integri is a wholly owned, autonomous business unit of Clear2Pay, an international financial technology company focused on delivering globally applicable solutions for secure, timely electronic payments. Clear2Pay operates from 13 international offices and currently employs over 400 staff.

Integri headquarters

Leuvensesteenweg 325/3
B-1932 Zaventem
Belgium
P: +32 2 717 69 00
F: +32 2 717 69 67
E: info@integri.com
W: www.integri.com