



**Integri**

a Clear2Pay company

# INQ® Open Platform

## Level 1 Script Editor

### Description

The application independent layer of the contact smartcard-to-card reader interface is commonly referred to as Level 1. Organizations such as EMVCo have defined a detailed set of tests to check the compliance of a card reader to these Level 1 specifications.

The INQ Level 1 Platform provides, amongst others, a test environment for executing these level 1 test cases. A number of test suites (e.g. EMV 2000 Level 1 Terminal Test Suite) are off-the-shelf available from Integri.

Integri's Level 1 Script Editor is an Add-On of the INQ Level 1 Platform and is used to develop additional Level 1 protocol tests for terminals. It lets you develop test scenarios to suit your needs. Using a dedicated script language, you can modify existing tests or create new ones from scratch. The set of available keywords allows you to specify same- or opposite-direction delays, introduce signal parity errors, exchange data using the direct or opposite convention, change the baud-rate and much more. The Script Editor is ideal for use in combination with existing Level 1 Test Suites, enabling the existing pre-defined scenarios to be modified to diagnose the reason for a failure or test a terminal's limits. It can also be used to modify scripts used to test other smartcard readers and terminals based on the ISO/IEC 7816-3 specification such as GSM or UTMS handsets, or set-top boxes.

This tool enables:


- Conversion of a given scenario or ICC Logger file into an equivalent script file
- Conversion of a script file into a scenario for use with the Level 1 Player.

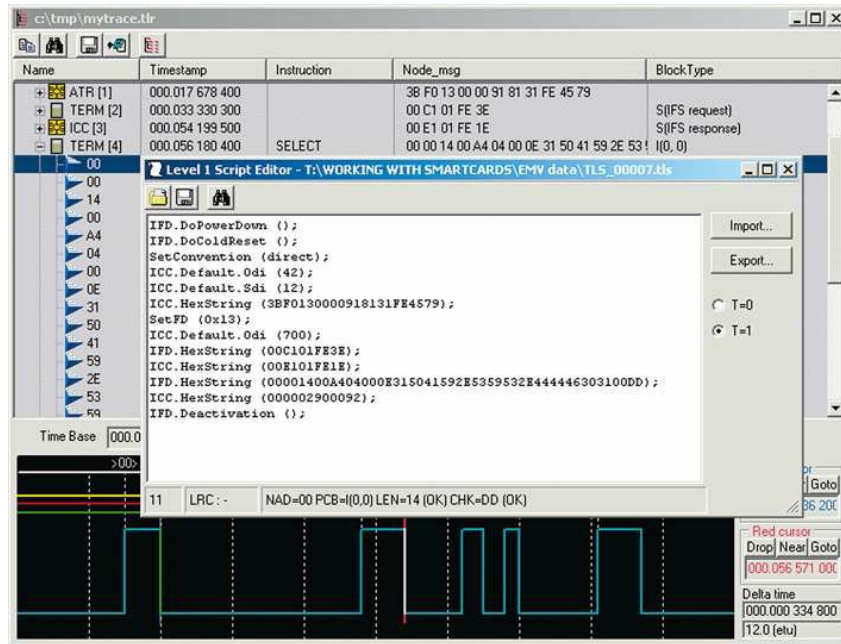
Scripts created with the Script Editor can be run on the INQ Level 1 Player application embedded in the STAR 3150 hardware adapter. The Level 1 Player interprets the predefined scripts and produces an output file that can be analyzed with the Protocol Analyzer module.

### Highlights

- Edit existing scenarios or create new ones
- Immediate conversion from / to ICC Logger files
- ATR parsing and analysis of T = 1 protocol blocks
- Ideal for use with existing Level 1 Test Suites (such as the EMV 2000 Level 1 Terminal Test Suite)

**Out of the box testing**





## Technical Specifications

The Level 1 Script Editor has been developed based on following specifications:

- ISO/IEC 7816-3: information technology – Identification cards – Integrated circuit cards with contacts – part 3: electronic signals and transmission protocols Product family
- EMV 2000 L1 Terminal Testing • EMV 2000 L2 Terminal Testing

## Product Family

Runs on the INQ Level 1 Platform - Contact Terminal Testing Configuration

[www.integri.com](http://www.integri.com)



**Integri**

a Clear2Pay company

Integri is a wholly owned, autonomous business unit of Clear2Pay, an international financial technology company focused on delivering globally applicable solutions for secure, timely electronic payments. Clear2Pay operates from 13 international offices and currently employs over 400 staff.

### Integri headquarters

Leuvensesteenweg 325/3  
B-1932 Zaventem  
Belgium  
P: +32 2 717 69 00  
F: +32 2 717 69 67  
E: [info@integri.com](mailto:info@integri.com)  
W: [www.integri.com](http://www.integri.com)