

Description

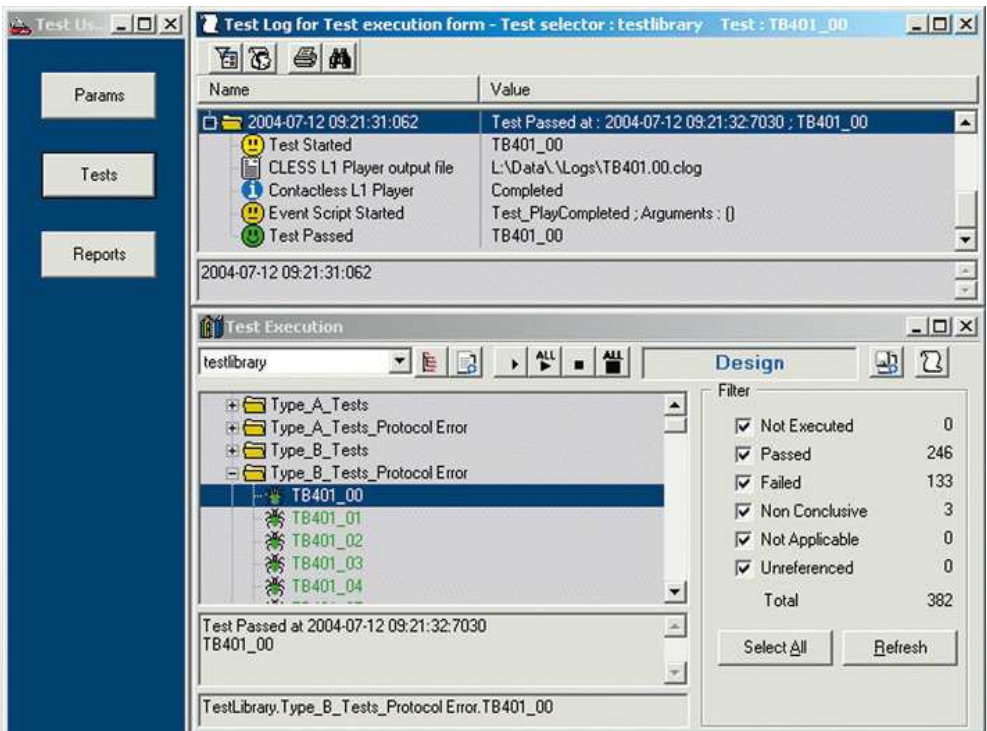
Integri's PayPass™ Terminal Test Suite runs on top of the INQ Level 1 Platform – Contactless Terminal configuration. It tests the compliance of any contactless terminal to the PayPass™ – ISO/IEC 14443 implementation specification (functional part only). It is easy to use and contains around 400 tests developed in collaboration with Micropross and based on the MasterCard specifications. The terminal runs a loop-back application while the Micropross CLASS 3150 hardware adapter emulates a smartcard.

Each time a test is run, the tool in the CLASS 3150 loads a scenario that precisely defines the expected terminal commands and corresponding smartcard responses. Any significant discrepancy between the terminal's expected and actual behavior is automatically reported as a test error.

A comprehensive log allows tracing and analyzing transactions between the device and the contactless smartcard. The Test Suite is indispensable for testing and debugging PayPass™ devices. It can represent a major cost savings when official certification is required.

Highlights

- Complete set of functional tests for contactless terminal level 1 type approval
- Uses INQ's embedded contactless trace viewer
- Fully automated – no user action required



Technical Specifications

- ISO/IEC 14443-3: 2001 identification cards – Contactless integrated circuit(s) cards – Proximity cards – Part 3: initialization and anti-collision
- ISO/IEC 14443-4: 2001 identification cards – Contactless integrated circuit(s) cards – Proximity cards – Part 4: transmission protocol
- PayPass - ISO/IEC 14443 implementation specification, version 1.1, March 2006
- Contactless Terminal Type Approval: Test Bench Description. Executable tests – TPP/EXE/T01, Issue 2.1, July 2006.

Product Family

Runs on the INQ Level 1 Platform - Contactless Terminal Testing configuration
Requires Micropross CLASS 3150 hardware adapter and embedded software.

www.integri.com



Integri

a Clear2Pay company

Integri is a wholly owned, autonomous business unit of Clear2Pay, an international financial technology company focused on delivering globally applicable solutions for secure, timely electronic payments. Clear2Pay operates from 13 international offices and currently employs over 400 staff.

Integri headquarters

Leuvensesteenweg 325/3
B-1932 Zaventem
Belgium
P: +32 2 717 69 00
F: +32 2 717 69 67
E: info@integri.com
W: www.integri.com