



Integri

a Clear2Pay product

MasterCard™ M/chip 4® Level 2 Card Test Suite

Integri End-to-End Payment Platform

Product Features

- Automated card test tool for functional testing and debugging of MasterCard M/Chip 4 cards
- Guarantees compliance to M/Chip 4.0 specifications
- Add-ons available for automated card profile loading

Your Benefits

- **Gain time:** automated test tool
- **Customer satisfaction:** ensure high quality cards
- **Cost-efficiency:** avoid costly modifications post roll-out
- **Ultimate flexibility:** built on Integri's Open Test Framework, easy to modify or add tests
- **User-friendly:** intuitive graphical user interface
- **Scalable:** add-on available for card profile creation

Product Description

When issuing or personalizing your M/Chip cards, you want to ensure that these are 100% compliant to the MasterCard specifications. Moreover, you want to guarantee that you deliver the highest possible quality product to your customers. And as your M/Chip cards contain relatively expensive microprocessors and sensitive technology so it goes without saying that it is a cumbersome task to modify once in the field. Clearly, replacement costs will be high and your image in the market could be seriously damaged.

Integri's M/Chip Level 2 Card Test Suite is a very **versatile and user-friendly** tool. The software solution simply runs on a PC connected to a smart card reader. The tester can test **interactively**, by selecting one of the request APDU templates, modifying it and sending it to the card reader. The tool can automatically check the response by comparing it to the card model.

Tests can also be automated in test scripts, covering all possible valid and invalid requests. Each test script sends a number of commands to the smartcard and evaluates the received responses using an embedded reference implementation of the M/Chip application. The clear structure of the script files and the tool's simple user interface make it easy to create new test scenarios.

A **comprehensive log** allows tracing and analyzing transactions between the tool and the smartcard. All TLV tags are automatically parsed and represented with full tag description. Test results are stored in database, allowing comparing different test runs during non-regression testing, to make reports, etc...


Card Profile Loader Add-on

Allows creation of defined EMV card profiles on one single test card.

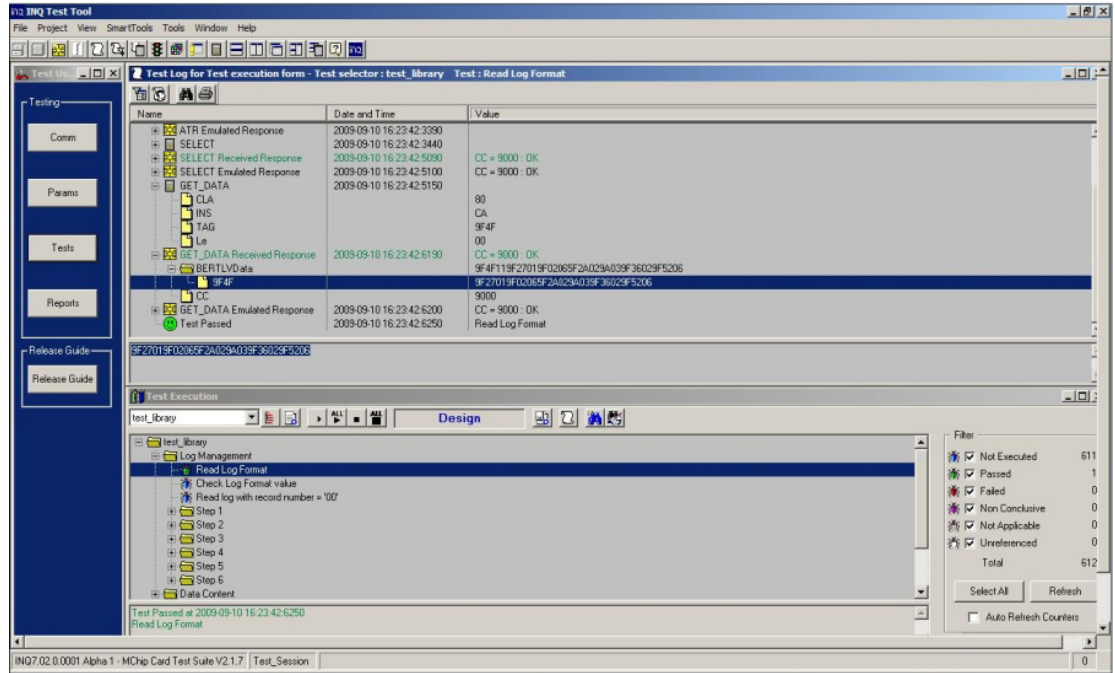
- Gain time
- Improve cost-efficiency
- Utility available for all Integri Level 2 Card Test Suites.

Dedicated Fact Sheet available comprising detailed information

Out of the box testing



Screenshot



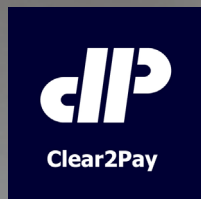
Reference

NXP uses the Card Profile Loading Solution as add-on to the M/Chip 4 L2 Card Test Suite (Contact) and the PayPass M/Chip and Magstripe L2 Card Test Suite (Contactless).

Product Family

Requires Integri End-to-End Payment Platform – Card Testing configuration

www.clear2pay.com/carddivision



Integri is a product brand of Clear2Pay, an international financial technology company focused on delivering globally applicable solutions for secure, timely electronic payments. Clear2Pay employs over 600 staff.

Clear2Pay

Leuvensesteenweg 325/3
B-1932 Zaventem
Belgium

P: +32 2 717 69 00

F: +32 2 717 69 67

E: info@clear2pay.com

W: www.clear2pay.com/carddivision