



Integri

a Clear2Pay product

## MasterCard *PayPass*<sup>®</sup> Level 2 Card Test Suite

### Integri End-to-End Payment Platform

#### Description

Off-the-shelf tool for functional testing of your *PayPass*<sup>®</sup> M/Chip and Magnetic Stripe application:

- Pre-certification
- Overall quality assurance

The solution allows straightforward testing of:

- Common personalisation processes
- Security and key management
- Card applications for credit and debit cards

#### Your benefits

- **Gain time:** automated test tool
- **User-friendly:** intuitive graphical user interface
- **Cost-efficiency:** ensures a successful type approval submission
- **Customer confidence:** get the highest possible quality products
- **Ultimate flexibility:** built on INQ<sup>®</sup> Open Platform, easy to modify or add tests
- **Scalable:** add-on available for card profile creation
- **Durable solution:** specification updates included in maintenance

#### Product features

MasterCard's *PayPass*<sup>®</sup> M/Chip product is an EMV compatible, contactless payment application based on the ISO-14443 standard providing cardholders a convenient and fast way to pay by simply waving the payment card or device across a terminal reader. Contactless payment applications are nowadays a reality and mostly address low-value payments where speed and convenience are key factors: public transport, fast food chains, movie theaters, vending machines, stadiums, etc.

The *PayPass* Level 2 Card Test Suite is the **indispensable test tool** to ensure that your *PayPass* application is bug free and ready to be submitted to an official certification laboratory. It enables you to go to market fast, with a high quality product that meets the market's requirements.


The tool comes with a detailed user manual so it's **easy to set-up**. It guides you step by step through the installation process and after a minimal configuration you are ready to start **automated testing** of your *PayPass* cards, covering all possible valid and invalid requests. The tool contains **more than 200 test cases** and the clear structure of the script files and user interface make it easy to create new test scenarios. The tool allows to simulate virtually any payment terminal and it is easy to repeat all previously performed test campaigns.

The **interactive testing mode**, enables you to send a command to the card under test. You can select a specific command, fill in the details of the command and send it directly to the card. The response of the card can be viewed instantly.

The user can see all the details of the APDU's exchanged between the tool and the card under test in the **Log Viewer**. Select your specific test and all details are consultable in a split second. There's exhaustive report options with the possibility to compare different test runs.

It's a **portable, laptop-based solution** that runs on Integri's Open Test Platform for ultimate flexibility. This development platform allows you to program simulators, write scripts and run tests. It can easily be customized, giving you the freedom to build your own personalized project.

Out of the box testing



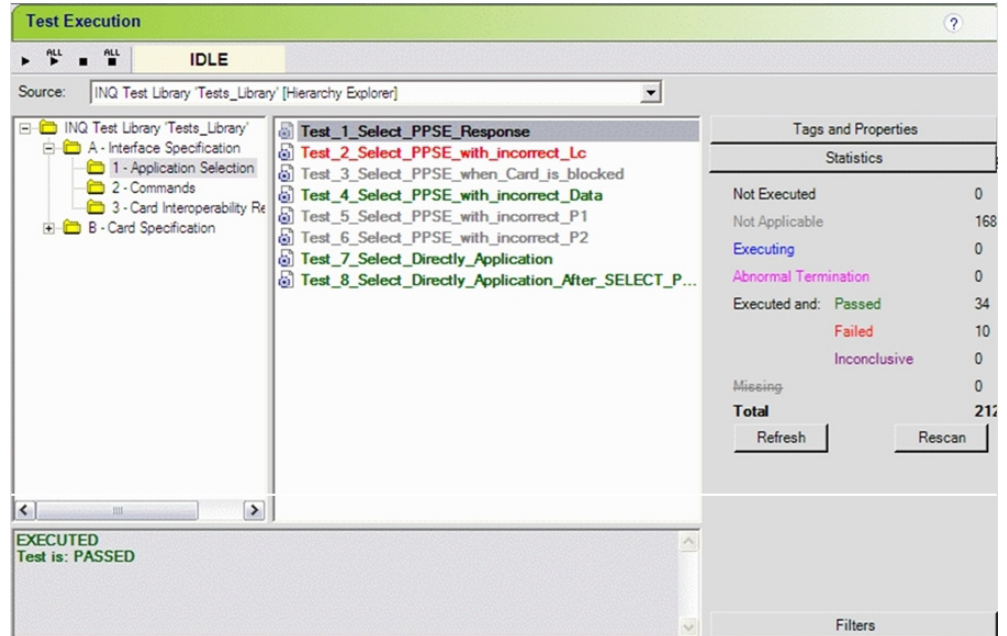
## Card Profile Loader Add-on

Allows creation of defined EMV card profiles on one single test card.

- Gain time
- Improve cost-efficiency
- Utility available for all Integri Level 2 Card Test Suites.

Dedicated Fact Sheet available comprising detailed information

## Screenshot



## Some references

Integri's PayPass Level 2 Card Test Suite is used by NXP, Infotrust among others.

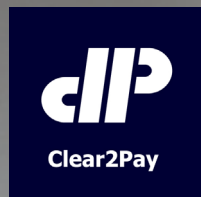
## Technical Specifications

- PayPass – M/Chip 4 Card Technical Specification, Version 1.3.1, September 2008
- PayPass – M/Chip Reader Card Application Interface Specification, Version 2.0, September 2008
- PayPass – Mag Stripe Technical Specifications, Version 3.3, December 2007

## Product Family

Requires Integri End-to-End Payment Platform – Card Testing configuration

[www.clear2pay.com/carddivision](http://www.clear2pay.com/carddivision)



Integri is a product brand of Clear2Pay, an international financial technology company focused on delivering globally applicable solutions for secure, timely electronic payments. Clear2Pay employs over 600 staff.

### Clear2Pay

Leuvensesteenweg 325/3  
B-1932 Zaventem  
Belgium

P: +32 2 717 69 00

F: +32 2 717 69 67

E: [info@clear2pay.com](mailto:info@clear2pay.com)

W: [www.clear2pay.com/carddivision](http://www.clear2pay.com/carddivision)