



Integri

a Clear2Pay company

Test Products and Services



MEAS to MAS migration Integri Service Offering



- **Introduction**

- **CURRENTLY**

- European MasterCard members : EPSNET & MEAS simulator
 - Other : BANKNET & MAS simulator

- **Number of impacts when migrating from EPSNET to BANKNET**

- Production point of view (EPSNET -> BANKNET)
 - Simulator point of view (MEAS -> MAS)

- **HOW CAN INTEGRI HELP ?**

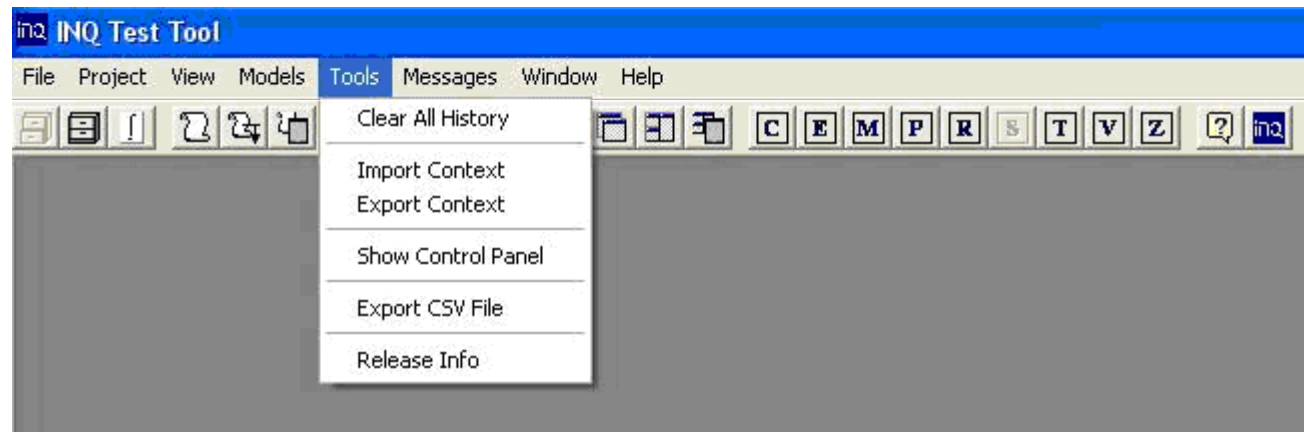


- **Comparison of simulators**

- **1 - USER INTERFACE**

- MEAS:

- INQ Open Platform user interface
 - Generic, flexible user interface
 - Most appreciated by technical-oriented testers
 - Interactive Form & Control Panel





a Clear2Pay company

Test Products and Services



Comparison of simulators

1 - USER INTERFACE

MAS:

- User interface specifically developed by Integri for MasterCard
- Oriented towards business users
- Starting point is central dashboard from which 4 sovereign applications can be accessed
 - Test Preparation: to build test cases
 - Test Monitoring: to run tests and activate parts of the authorization table
 - Test Results: to validate test results
 - Options: to configure test parameters

The screenshot shows the 'Test Monitor - INQ Test Tool' interface. It features a menu bar (File, Testing, Help), a toolbar with various icons, and a main window divided into a tree view on the left and a data table on the right.

Tree View:

- ETEC Groups
 - My test scripts
 - Integration Test (Description: For testing of Credit changes)
 - AMCC
 - AMCC - Issuer Testing (Description: Non US Currency)
 - Currency Conversion (Description: Use this as an example to show making changes ; to txn to get rid of the errors, an run it ; v)
 - M/Chip On Behalf Services
 - Issuer Host MChip Test scripts (Description: For Issuer Host testing)
 - AAV Test Group
 - CVCI Issuer Test
 - PayPass ETECS
 - Keith's test cases (Description: For R5.2)
 - Imported

Table View:

Name	Description	Hits
0800 APS to NTW Sent		99101
0800 IPS to NTW Sent		99101
0800 APS to NTW Rcvd		99101
0800 IPS to NTW Rcvd		99101
0810 NTW to APS Sent		99101
0810 NTW to APS Rcvd		99101
0810 NTW to IPS Sent		99101
0810 NTW to IPS Rcvd		99101
Options		2006-01-30 15:04:46:845

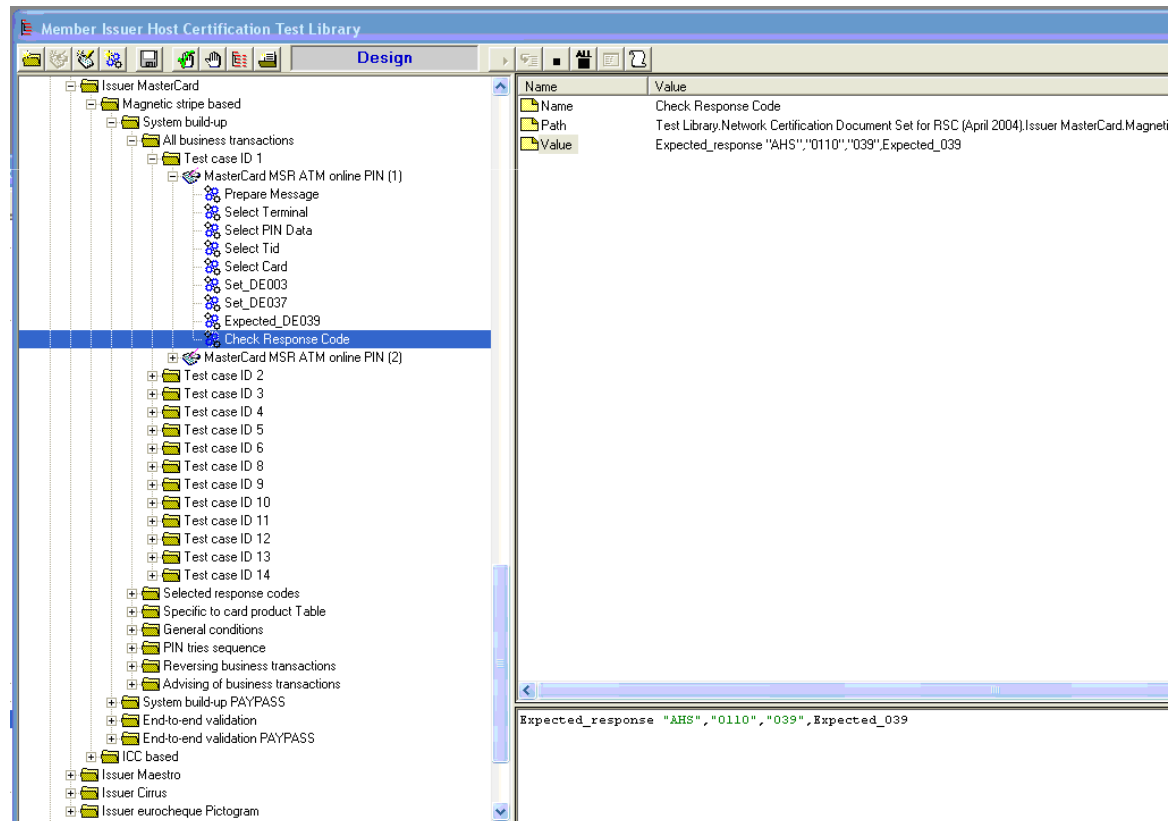


- **Comparison of simulators**

- **2 - TESTING**

- MEAS:

- Using Test Script Library, i.e. container of automated test scripts
 - Test code can be added in IBScript language
 - Quite some members used this feature to define proprietary test cases



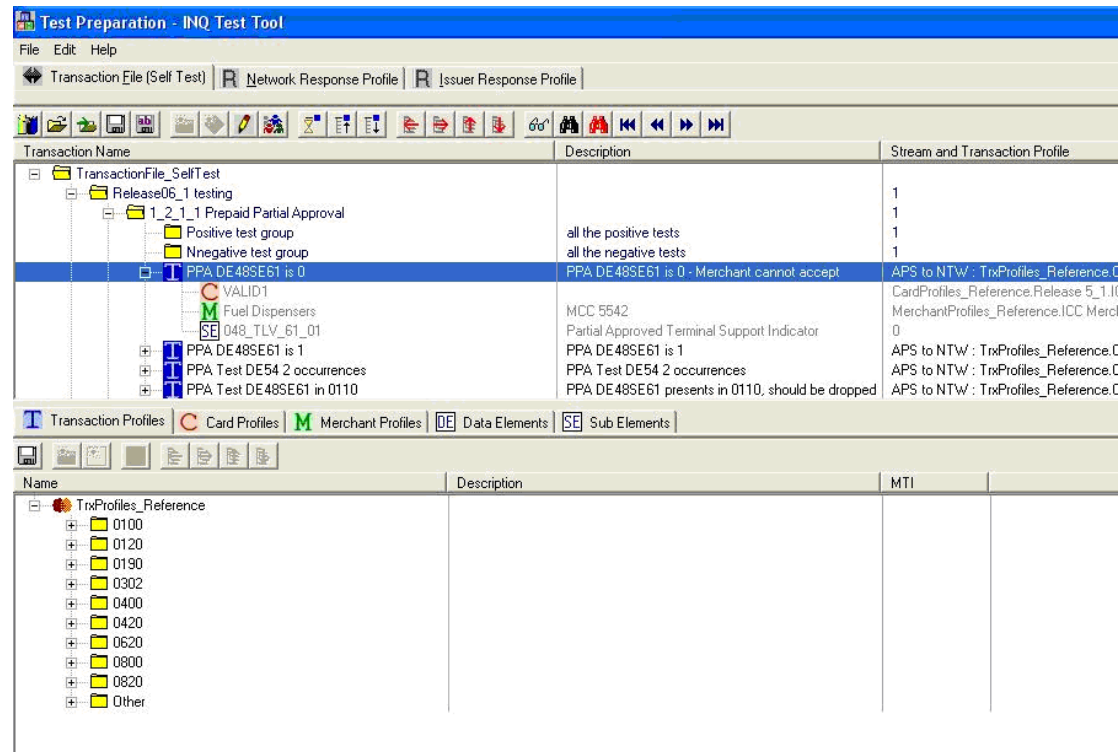


- **Comparison of simulators**

- **2 - TESTING**

- MAS:

- All testing triggered in Transaction File
 - Test cases can be constructed in the 'Test Preparation' sovereign application in the most flexible way
 - Response profiles can be defined for Acquirer testing and can be individually enabled or disabled



Transaction Name	Description	Stream and Transaction Profile
TransactionFile_SelfTest		
Release06_1 testing		1
1_2_1_1 Prepaid Partial Approval		1
Positive test group	all the positive tests	1
Nnegative test group	all the negative tests	1
PPA DE 48SE61 is 0	PPA DE 48SE61 is 0 - Merchant cannot accept	APS to NTW : TrxProfiles_Reference.C
VALID1		CardProfiles_Reference.Release 5_1.1
Fuel Dispensers	MCC 5542	MerchantProfiles_Reference.LCC Mercl
048_TLV_61_01	Partial Approved Terminal Support Indicator	0
PPA DE 48SE61 is 1	PPA DE 48SE61 is 1	APS to NTW : TrxProfiles_Reference.C
PPA Test DE54 2 occurrences	PPA Test DE54 2 occurrences	APS to NTW : TrxProfiles_Reference.C
PPA Test DE 48SE61 in 0110	PPA DE 48SE61 presents in 0110, should be dropped	APS to NTW : TrxProfiles_Reference.C

Name	Description	MTI
TrxProfiles_Reference		
0100		
0120		
0190		
0302		
0400		
0420		
0620		
0800		
0820		
Other		



Integri

a Clear2Pay company

Test Products and Services



- **Comparison of simulators**

- **3 - CERTIFICATION**

- MEAS:

- Used as mandatory test tool
 - With official test script library to be executed as part of certification process

- MAS:

- Used as toolbox offering a number of features to build test cases
 - When building test cases the reference transaction-, merchant- and card profiles – as defined by MasterCard – need to be used for certification testing



Integri

a Clear2Pay company

Test Products and Services



- **Comparison of simulators**

- **4 - LOG**

- MEAS:

- Standard INQ logs
 - Sequential log and test logs

- MAS:

- Displayed in 'Test Results' sovereign application
 - Several features available for filtering, transaction selection, exporting of results etc.



- **Comparison of simulators**

- **5 - PROCESSING**

- MEAS:

- All processing delivered in script modules
 - Sources are visible and accessible for professional users
 - Some of these members defined code for specific cryptography, access to card reader, proprietary business rules etc.

- MAS:

- All processing delivered in a compiled form
 - All interventions of standard and professional users occurs via the user interface of MAS simulator
 - Professional version has more advanced features in user interface than standard version



Integri

a Clear2Pay company

Test Products and Services



- **Migration Impact**
 - Migration of user card profiles
 - Migration of user merchant profiles
 - Migration of user test cases
 - Migration of user specific code



Integri

a Clear2Pay company

Test Products and Services



- **Integri can help !**
 - Alliance partner of MasterCard
 - Developed all authorization simulators (MEAS, Debit, Credit (MAS))
 - We can assist you with:
 - Transfer of user card data
 - Transfer of user merchant data
 - Definition of user test cases in MAS
 - Transfer of self-defined code
 - Acceptance testing



- **INQ Development Kit**
 - Want to perform migration yourself ?
 - INQ Development Kit offers the following advantages:
 - **Integrated**
 - allows you to open MAS in 'development mode'
 - **Toolkit**
 - series of modular components available
 - **User defined code**
 - by using the scripts modules that are available
 - **Extendable**
 - other – domestic or international – interfaces can be developed on the same platform



Integri

a Clear2Pay company

Test Products and Services



- **CONCLUSION : A solution tailored to your needs**
 - **INTEGRI as Consultant**
 - Uniquely positioned as developer of both MEAS and MAS
 - To conceive test strategy or test plan
 - **INTEGRI as Test Service Provider**
 - Any kind of service during migration projects
 - Migration of user defined data to acceptance testing
 - **INTEGRI as Test Software Provider**
 - INQ Development Kit
 - **Flexible**
 - Any combination of the above



- **YOUR BENEFITS**
 - **Cost Reduction**
 - Leaving transfer of user specific data and code to experts in both MEAS and MAS
 - Shorter migration periods => reduction of cost
 - **Concentrate on core business**
 - Outsourcing migration of simulator files to 3rd party
 - Concentrating yourself on migration of production environment
 - **Improve quality**
 - Assist you with acceptance and regression testing during course of project
 - Overall increase in quality
 - **Tailor-made**
 - Ability to customize offering to exact needs
 - Training on use of INQ Development Kit